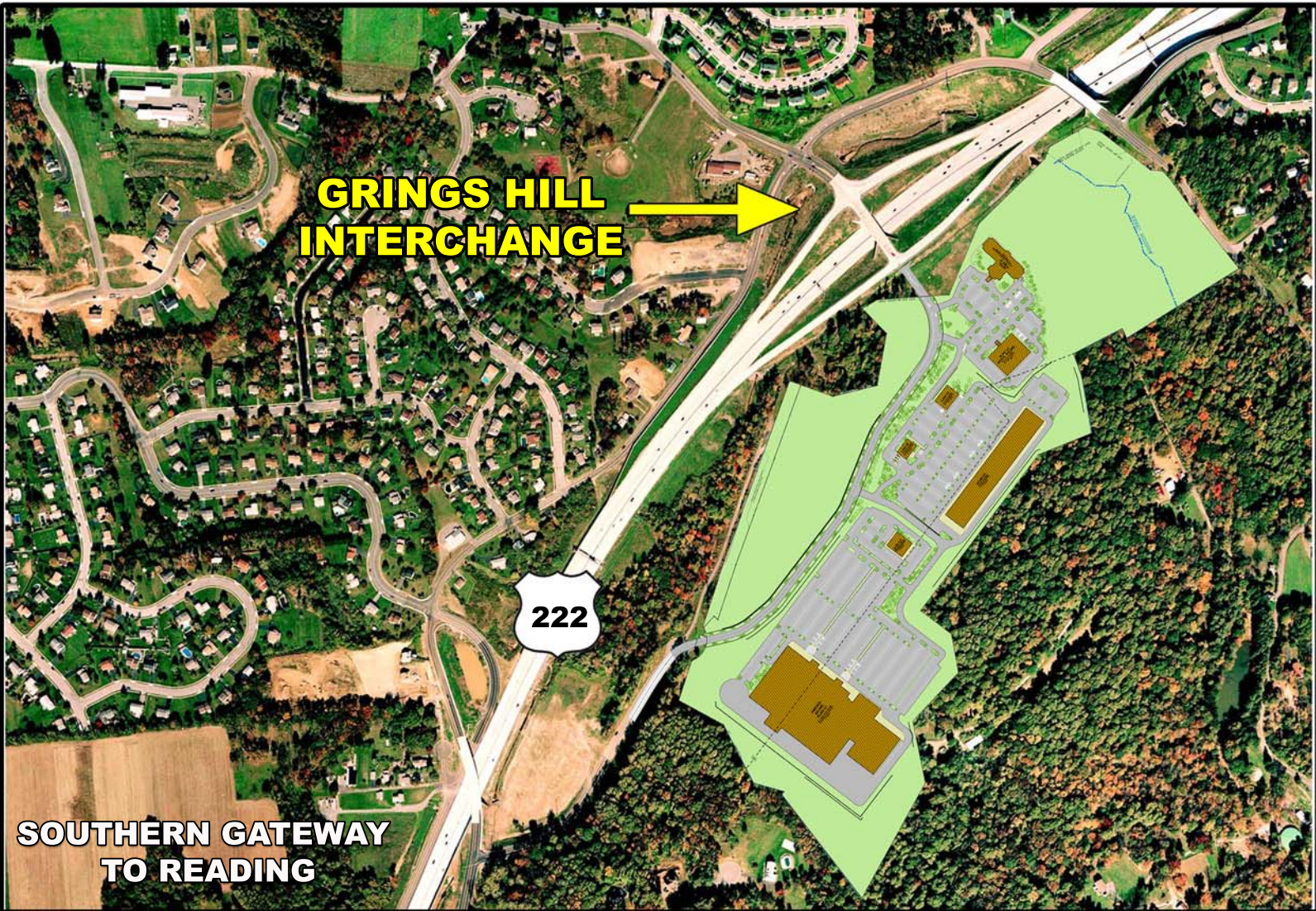


NEW RETAIL DEVELOPMENT

222 & Grings Hill Interchange, Reading, PA



PROJECT OVERVIEW:

- **Phase I: Fully approved - groundbreaking planned 3rd QTR. 2009**
 - 21,000 SF planned medical office with quick care
 - Fully approved hotel pad available for 101 rooms with 108 parks on 2.75 acres
- **Phase II: Preliminarily approved for 300,000 SF of retail plus pads**

PROJECT DETAILS:

- **Zoned Highway Commercial**
- **3,000 FF on RT. 222**
- **38,000 VPD on RT. 222**

DEMOGRAPHICS

	<u>1 MILE</u>	<u>3 MILE</u>	<u>5 MILE</u>
Population:	4,416	48,101	106,936
Med HH Income:	\$75,913	\$65,546	\$58,437

ERIC REVENE

Phone: 717-232-2888

Fax: 717-232-0388

erevene@comcast.net



READING, PA

